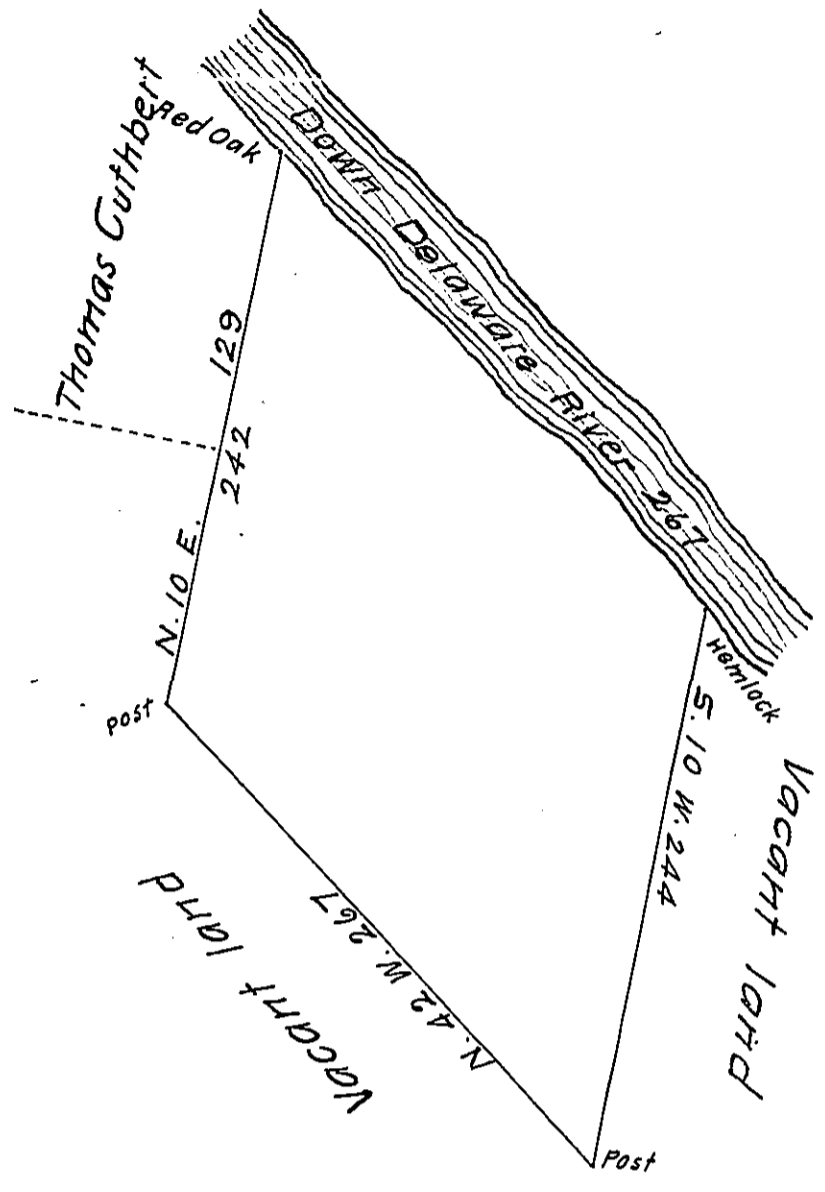


The bearing & distance down Delaware Ave.

- 1 5.42 E. 34 ✓
- 2 5.36 E. 48 ✓
- 3 5.45 E. 66 ✓
- 4 5.53 E. 40 ✓
- 5 5.39 E. 79 ✓

26.7



By virtue of a warrant dated the 7th December 1785 Surveyed the 10th December 1791 to Elias Mushbach the above described tract of land situate — the West side of Delaware River opposite the New Raringtons in Northampton County containing three hundred acres a quarter and the allowance of six $\frac{7}{10}$ cent $\frac{10}{100}$.

$\frac{7}{10}$ Geo. Palmer _____

Daniel Brodhead Esq }
 Survr Genl }

IN TESTIMONY that the above is a copy of the original remaining on file in the Department of Internal Affairs of Pennsylvania, made conformably to an Act of Assembly approved the 16th day of February, 1833, I have hereunto set my Hand and caused the Seal of said Department to be affixed at Harrisburg, this tenth day of May 1912

Henry Houch
 Secretary of Internal Affairs.